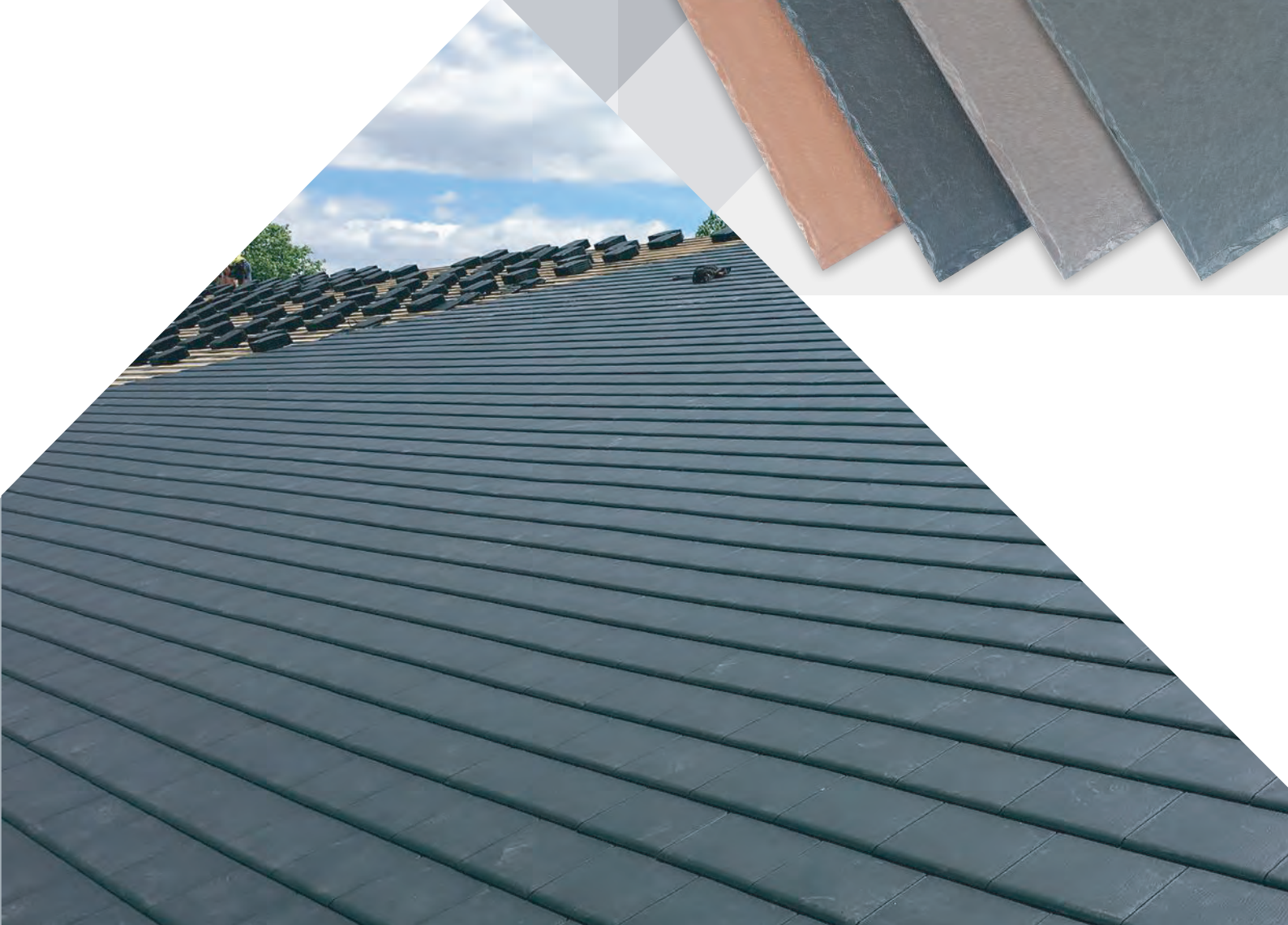
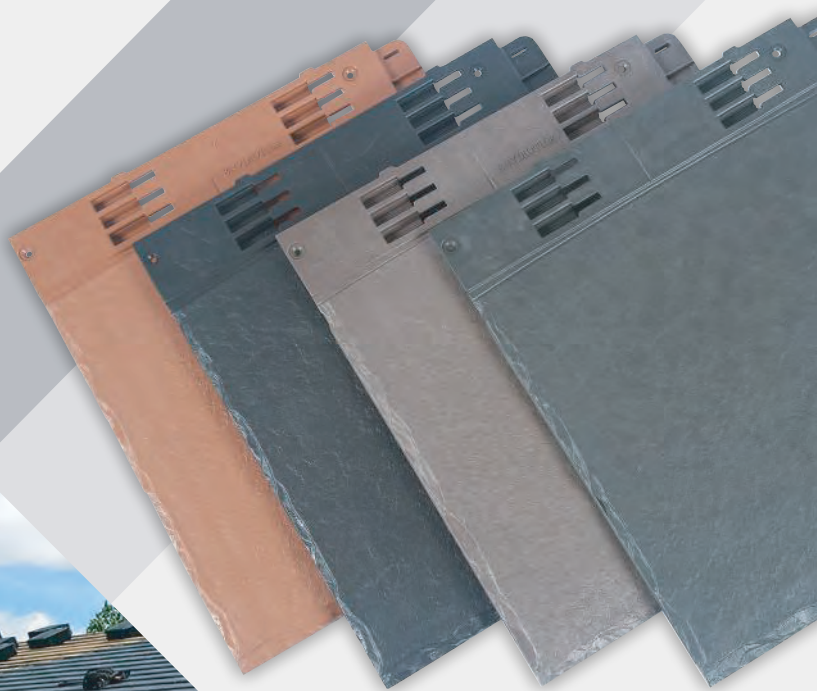




Cost saving, sustainable roof tile



INTRODUCTION

RECYCLED POLYMER, LIGHTWEIGHT ROOF TILE



SAVE TIME, SAVE MONEY

Roofing has its own challenges... Envirotile, the revolutionary, lightweight, interlocking roof tile system makes your job easier!

Envirotile ticks all the boxes for its technical design and helps promote better working conditions for roofers - minimising risk and conforming to the Health & Safety at Work Policy.

Being only 20% of the weight of a concrete tile Envirotile reduces carrying load weights and the unique polymer material (made from 75% recycled product) means there's no dust during cutting.

Envirotiles also assist with improved foot grip whilst traversing the covered tiled roof - and they're virtually unbreakable!

A flat, precision manufactured, recycled polymer, lightweight roof tile with excellent green credentials. Produced in two finish effect options - our original tile with a textured finish and our latest addition of the slate-effect finish - both are aesthetically pleasing in all aspects. Extremely simple to fix yet performs exceptionally, locking into adjacent tiles to form a fully integrated roof covering. Envirotile performs to roof pitches as low as 12.5 degrees.

Envirotile is the most advanced roof tile available; affordable, high performing and environmentally friendly. Envirotile actually helps to reduce build and labour costs.

BENEFITS OF ENVIROTILE ROOF TILES



Lightweight and easy to install



Textured or slate-effect finish



Less tiles per roof



More secure with unique fitting system

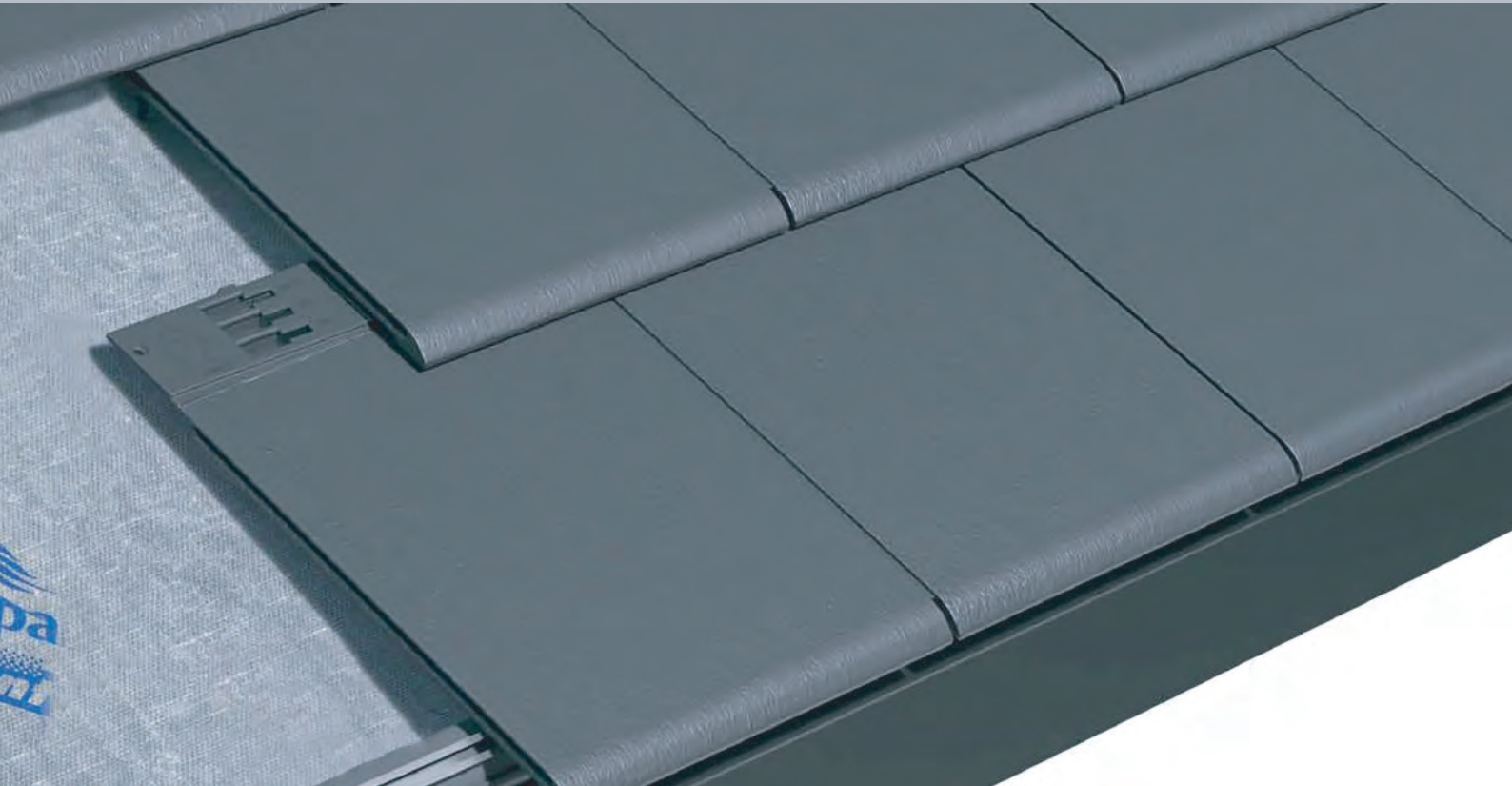


Can be installed to a minimum 12.5° pitch



25-year guarantee for peace of mind

UNIQUE DESIGN - STORM TESTED



Unique design with superior performance

- ▶ Manual dry cutting can be performed at secured height level with no atmospheric dust
- ▶ Outperforms traditional roofing materials
- ▶ Uses 75% recycled materials
- ▶ Supports sustainable homes initiatives when meeting new build standards
- ▶ Is easier to use and fit than conventional tiles
- ▶ Our products combine superior sustainable performance with unique technical features

With the unique interlocking fixing system - Envirotile has unrivaled performance and is quick and easy to install. They are fully guaranteed to perform against severe UK wind loads in any designated zonal area within the UK and we offer a free replacement service for dislodged roof tiles caused by gale force winds up to 65mph (subject to our Terms & Conditions). The Envirotile 8 Fix proven performance guarantee is in addition to our standard 25 year product guarantee.

Warranty Details Envirotile

Envirotile is covered by a Twenty Five (25) year warranty against material product defect or failure of the product to perform on a roof as an effective roofing product, when subject to normal use. For the full terms and conditions of this warranty please ask our branch staff for further documentation.



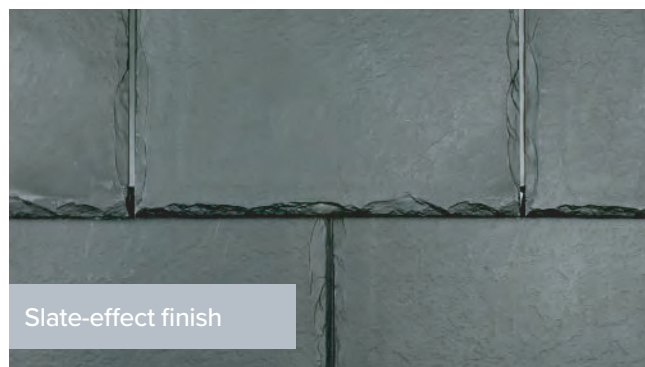
ENVIROTILE FINISH AND COLOUR

FINISH AND COLOURS

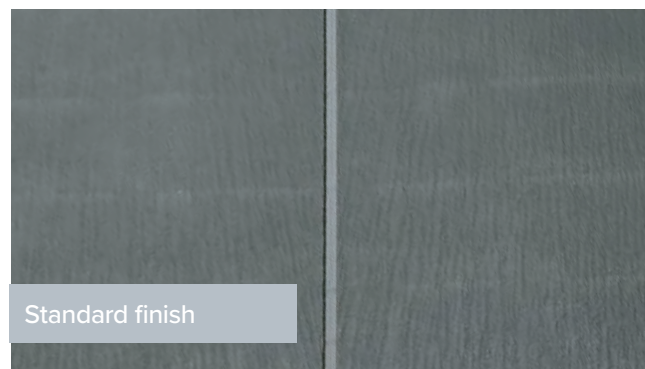


The Envirotile range of products have the following key benefits:-

- ▶ BBA Certified
- ▶ Conforms to BS 5534:2014
- ▶ Greenspec Endorsed
- ▶ Quick installation requiring minimal skilled labour
- ▶ Lightweight roof covering system - less than 8 kilos per m² coverage
- ▶ Envirotile is 80% lighter than concrete roof tile
- ▶ No harmful dust created during the cutting process
- ▶ Complete dry fix system - no cement needed
- ▶ Proven and tested at a low degree pitch of 12.5° against wind driven rain
- ▶ Weather tested to 147mph wind loads
- ▶ Improved grip surface
- ▶ Virtually unbreakable
- ▶ Anti-fungal properties
- ▶ Low maintenance
- ▶ UK manufactured
- ▶ Ridge products available
- ▶ Fully recyclable, manufactured from recycled plastics
- ▶ 25 Year Guarantee

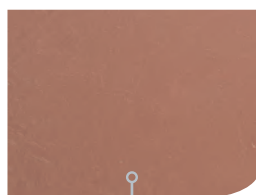


Slate-effect finish

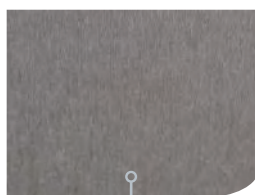


Standard finish

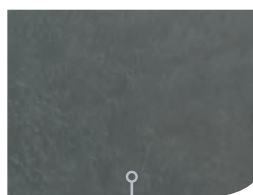
Colours available



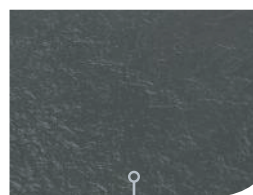
TERRACOTTA



DARK BROWN

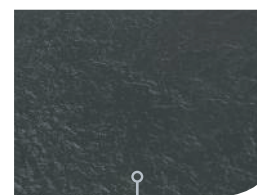


SLATE GREY



ANTHRACITE
GREY

Slate range only



ANTHRACITE
BLACK

Standard range only

HR FIREPROOF UNDERLAY



A quick guide to BS 5534 and roofing underlays

Under the new British Standards, many brands of underlay currently used will no longer be suitable to fit on UK roofs under the new standards. Envirolay Premier has been fully tested and exceeds the requirements of BS 5534 so you can rest assured you are using an underlay that is fit for purpose.

Roofing underlays reduce the wind load on the roof tiles by absorbing some of the wind load. Underlay must be fitted to manufacturers instructions. The current Code of Practice recommends the use of an additional timber batten installed over the horizontal lap between underlay courses as a preventative measure, although many roofers feel this is a trip hazard. The European Standard does not cover this issue so even underlays that are CE marked may not comply with the new Code of Practice.

Under the new Code of Practice there is a single test to measure the wind uplift resistance for underlays. All testing bodies will now follow this test. Envirolay Premier Roofers' HR Underlay complies with and exceeds the requirements of the test.

Slight sag in membrane allows moisture to drain in the middle of the rafter centres and prevents water tracking back through the fixings.

- Fire Resistant
- Exova Tested
- BS EN ISO 11925-2:2010
- DD CEN/TS 1187:2012 Test 4
- BS 5534:2014
- Bre Tested
- For use in all 1-5 Zonal Areas
- With or without the need of Duo Tape
- Suitable for most types of roof structures
- Cold Roof
- Warm Roof
- Solid Roof (Scotland)

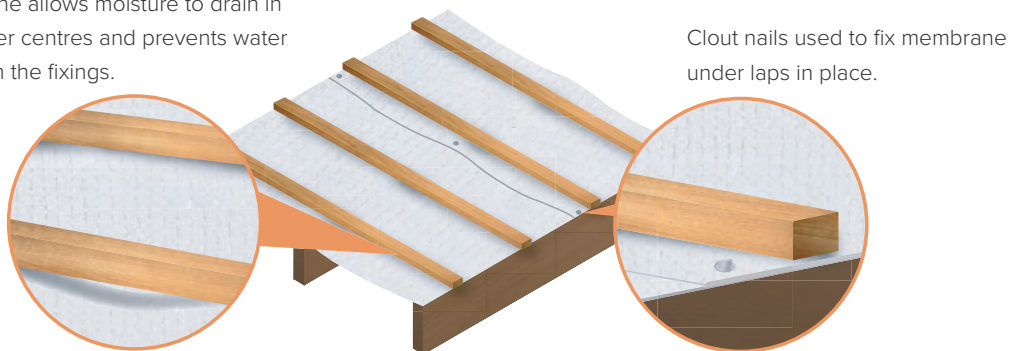


Diagram above shows: Overlap, batten gauge, sag and fixing of Envirolay Premier Roofers' HR Underlay

ENVIROTILE SLATE

COMPONENTS LIST

Envirotile Slate Single – Size: L:365mmxW:325mmxD:11mm

Slate Grey **ENVSLSSG**

Dark Brown **ENVSLSBR**

Terracotta **ENVSLSTR**

Anthracite Grey **ENVSLSBK**

Envirotile Slate Double – Size: L:365mmxW:630mmxD:11mm

Slate Grey **ENVSLDSG**

Dark Brown **ENVSLDBR**

Terracotta **ENVSLDTR**

Anthracite Grey **ENVSLDBK**

Envirotile Slate Half – Size: L:365mmxW:175mmxD:11mm

Slate Grey **ENVSLHSG**

Dark Brown **ENVSLHBR**

Terracotta **ENVSLHTR**

Anthracite Grey **ENVSLHBK**



Ridge Cap – Size: L:425mmxW:245mmxH:105mm

Slate Grey **ENVSLRCSG**

Dark Brown **ENVSLRCBR**

Terracotta **ENVSLRCTR**

Anthracite Grey **ENVSLRCBK**

Gable End Cap – Size: L:28mmxW:325mmxH:178mm

Slate Grey **ENVSLGEPG**

Dark Brown **ENVSLGEPBR**

Terracotta **ENVSLGEPTR**

Anthracite Grey **ENVSLGEPBK**

Hip Cap – Size: L:425mmxW:165mmxH:70mm

Slate Grey **ENVSLHCSG**

Dark Brown **ENVSLHCBR**

Terracotta **ENVSLHCTR**

Anthracite Grey **ENVSLHCBK**

Hip End Cap – Size: L:180mmxW:165mmxH:90mm

Slate Grey **ENVSLHECSG**

Dark Brown **ENVSLHECBR**

Terracotta **ENVSLHECTR**

Anthracite Grey **ENVSLHECBK**

Ridge To Apex – Size: L:252mmxW:292mmxH:145mm

Slate Grey **ENVSLRACSG**

Dark Brown **ENVSLRACBR**

Terracotta **ENVSLRACTR**

Anthracite Grey **ENVSLRACBK**



ENVIRO TILE STANDARD

COMPONENTS LIST

Envirotile Standard Single – Size: L:365mmxW:325mmxD:11mm

Anthracite Black **ENVSTSAG**

Slate Grey **ENVSTSGY**

Dark Brown **ENVSTSBR**

Terracotta **ENVSTSTR**

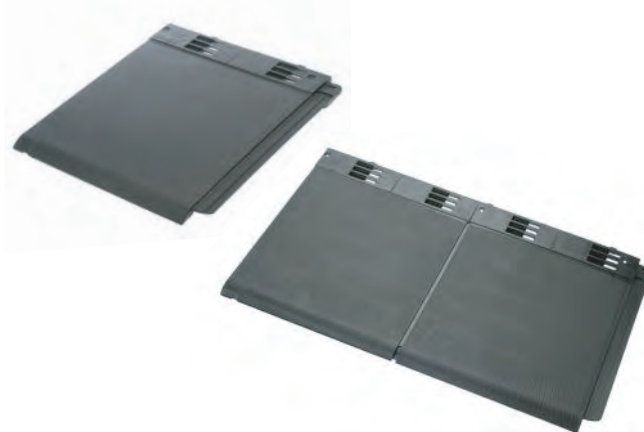
Envirotile Standard Double – Size: L:365mmxW:630mmxD:11mm

Anthracite Black **ENVSTDAG**

Slate Grey **ENVSTDGY**

Dark Brown **ENVSTDBR**

Terracotta **ENVSTDTR**



Ridge Cap – Size: L:475mmxW:300mmxH:170mm

Anthracite Black **ENVSTRCAG**

Slate Grey **ENVSTRCGY**

Dark Brown **ENVSTRCBR**

Terracotta **ENVSTRCTR**

Gable End Cap – Size: L:30mmxW:300mmxH:170mm

Anthracite Black **ENVSTGECAG**

Slate Grey **ENVSTGECGY**

Dark Brown **ENVSTGECBR**

Terracotta **ENVSTGECTR**

Hip Cap – Size: L:425mmxW:150mmxH:70mm

Anthracite Black **ENVSTHCAG**

Slate Grey **ENVSTHCGY**

Dark Brown **ENVSTHCBR**

Terracotta **ENVSTHCTR**

Hip End Cap – Size: L:180mmxW:150mmxH:70mm

Anthracite Black **ENVSTHECAG**

Slate Grey **ENVSTHECGY**

Dark Brown **ENVSTHECBR**

Terracotta **ENVSTHECTR**

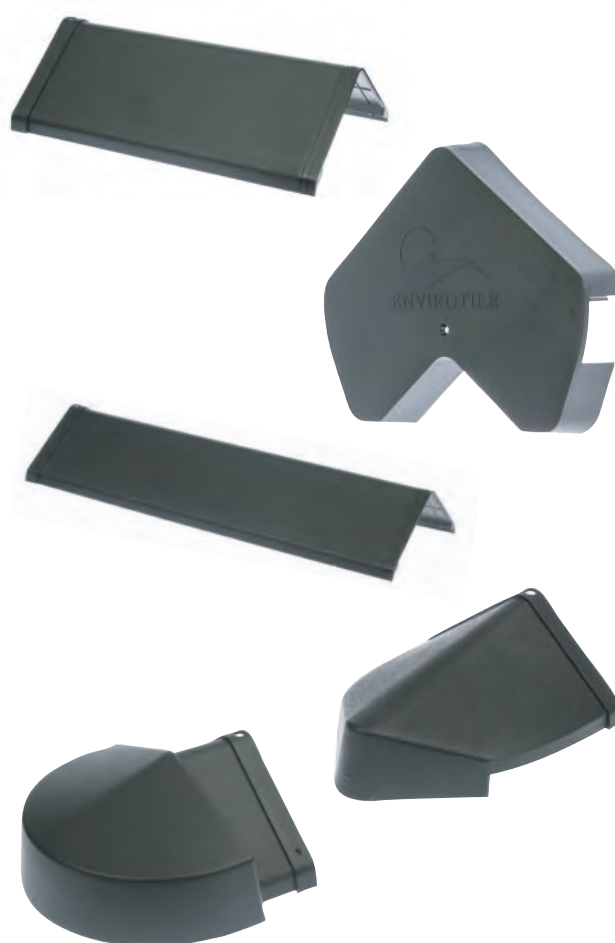
Ridge To Apex – Size: L:280mmxW:300mmxH:170mm

Anthracite Black **ENVSTRTAAG**

Slate Grey **ENVSTRTAGY**

Dark Brown **ENVSTRTABR**

Terracotta **ENVSTRTATR**



ENVIRO TILE STANDARD/SLATE

COMPONENTS LIST

Standard Lowline Vent –
Size: L:365mmxW:325mmxD:11mm + Profile

Anthracite Grey **ENVSTLVTAG**

Grey **ENVSTLVTGY**

Brown **EENVSTLVTBR**

Terracotta **ENVSTLVTTR**

Standard Cowl Vent –
Size: L:365mmxW:325mmxD:11mm + Profile

Anthracite Grey **ENVSTCVTAG**

Grey **ENVSTCVTGY**

Brown **ENVSTCVTBR**

Terracotta **ENVSTCVTTR**

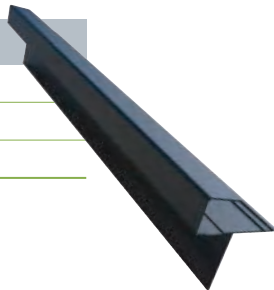


3m Dry Verge – Size: L:3000mm

Anthracite Grey **ENV3MDVAG**

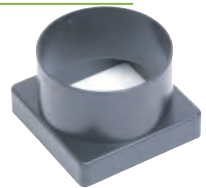
Brown **ENV3MDVBR**

Terracotta **ENV3MDVTR**



Square to Round Pipe Adaptor – Size: 110mm

Square to Round Pipe Adaptor **ENVSrPA110**



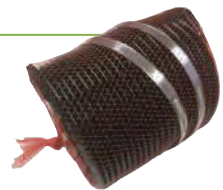
Ventilated Eaves Bar/Starter Rail –
Size: L:600mmxW:48mmxH:12mm

Eave Bar **ENVEB**



Flexitube and clips – Size: 112mm

Flexitube and clips **ENVFXCL**



Dry Verge Bracket

Anthracite Grey **ENVdVBAG**

Brown **ENVdVBBR**

Terracotta **ENVdVBTR**



Screw Cover Cap – Size: Large

Anthracite Grey **ENVSCCLAG**

Grey **ENVSCCLGY**

Brown **ENVSCCLBR**

Terracotta **ENVSCCLTR**

Screw Cover Cap – Size: Small

Anthracite Grey **ENVSCCSAG**

Grey **ENVSCCSGY**

Brown **ENVSCCSBR**

Terracotta **ENVSCCSTR**



Aluminium Hip Roll – Size: Dx180mmxL:6000mm

Aluminium Hip Roll 180mm **ENV180HIPROLL**



Fixings

90 x 6.3mm SS Pozi Pan Self Tapping Screw **ENVSCREW90**

32 x 4.2mm SS Pozi Pan Self Tapping Screw **ENVSCREW32**

Duo Plus Tape – Size: Dx40mmxL:6000mm

Duo Plus Tape **ENVTAPE**



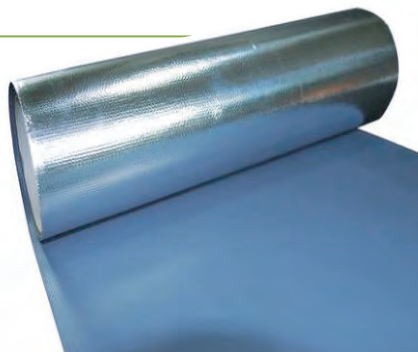
Ventilated Ridge Roll – Size: Dx330mmxL:6000mm

Ventilated Ridge Roll 330mm **ENV330RIDGEROLL**



Enviroloy – Size: Size: Dx130mmxL:25000mm

Enviroloy **ENVIROLAY**



FOR ALL ROOF TYPES

LIGHTWEIGHT CONSERVATORY



MAIN FRAME ROOFING



BACKED BY THE PROFESSIONALS

CERTIFICATION

Envirotile has undertaken rigorous testing with many professional bodies so that we can ensure that it is more than fit-for-purpose and will withstand all the British weather will throw at it.

It is backed by GreenSpec which is the foremost 'Green Building' resource in the UK. Independent of companies and trade bodies and launched in 2003 with government funding, GreenSpec promotes sustainable building products, materials and construction techniques.



EN 13859-1
2012



Test No. P101133-
1000 Issue: 2



BS5534





For more information about Envirotile Roof Tiles,
call our customer services team on **0330 043 6122**, or visit
www.ecotilerroofing.com

Ecotile Roofing Ltd,
128 City Road, London, EC1V 2NX



www.ecotilerroofing.com